



a home for people with special needs



**Cluny Farm Centre
Registered Welfare Organisation**

69 Rose Road, Sun Valley, Kyalami, Midrand, 1682
PO Box 68183, Bryanston, 2021
Tel: 011-702-1690/1
Email: admin@clunyfarm.co.za
Web: www.clunyfarm.co.za

Board of Directors:

M Higginson (Chairperson); E Burke (Vice Chairperson); C du Sautoy (Treasurer); C van Rooyen (Secretary);
(Board Members) W Moir; I Ranchod; S Vettori

APRIL 2021

**ON CALL
MAY**

Danny & Marlene Norton—076-426-2071 8th / 22nd May 2021
Patience—061-598-0014 15th / 29th May 2021



*Wishing all the Mothers a
Happy Mother's Day !*

WELCOME

Dear Parents and Members of the Cluny Farm Family,

Welcome to this our first edition of the new Cluny Farm monthly newsletter. We hope it will give you all some insight into happenings on the farm as well as newsworthy articles which will be of interest to you all. If you have any suggestions as to the content and any other information you would like to have included, please contact Dawn on marketing@clunyfarm.co.za.

The reduced fee application process is now finalised, and recipients of the reduced fees have been communicated with. Those of our parent/guardian body who did not complete the necessary documentation we can only assume you can afford to pay the full fee owing. Kindly note that application must be made on an annual basis for fee reduction in the prescribed format.

I will be hosting a General Manager's tea on May 30th on the farm from 10am. Refreshments will be served and I would like to welcome you all to attend. I would love to meet you and discuss issues which are of mutual concern to family of our Cluny Farm residents.

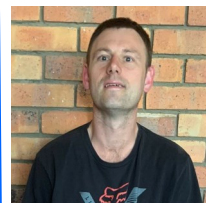
Please RSVP to Elise before May 23rd for catering purposes on admin@clunyfarm.co.za.

I look forward to welcoming you then!

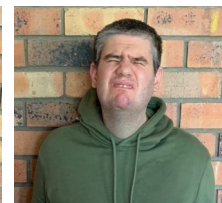
Sincerely
Jean

NEW RESIDENTS ON THE BLOCK

Its always exciting welcoming our new Residents to our Home. Welcome Adrian, Roelof and Alistair. Wishing you many happy years with us and may you build many friendships.



Adrian Dore has joined us in Melody House



Roelof Burger has joined us in Symphony House



Alistair Smith has joined us in Bambi House

NEW STAFF

A couple of familiar faces..... We would like to officially welcome Joseph, Lebo and Isaac to our Staff compliment. On behalf of Management and Residents, we would like to extend our warmest welcome and good wishes to you and are delighted to have you on board with us.!



Joseph Sibuyi joined our Maintenance team



Lebo Mphahlele joined our Kitchen team as a Cook



Isaac Chiguduli joined our Medical team as a Nurse



Wishlist

Residents requirements

Linen	Toiletries	Medical	Clothing
<ul style="list-style-type: none"> ◇ Duvet inners ◇ Duvet covers ◇ Pillows ◇ Pillow cases ◇ Mattress protectors ◇ Blankets ◇ Bath towels ◇ Face cloths ◇ Bath mats 	<ul style="list-style-type: none"> ◇ Sunblock ◇ Deodorant ◇ Soap ◇ Toothpaste ◇ Body lotion ◇ Nail brushes ◇ Tooth brushes 	<ul style="list-style-type: none"> ◇ Shampoo ◇ Hair brushes ◇ Tissues ◇ Shaving cream ◇ Aqueous cream ◇ Razors (disposable) 	<ul style="list-style-type: none"> ◇ Adult nappies ◇ Plastic Domette boxes for medication (weekly AM & PM) ◇ Nail clippers ◇ Plasters, Elastoplast ◇ Ensure
<ul style="list-style-type: none"> ◇ Tracksuits ◇ Raincoats ◇ Umbrellas ◇ Spensers ◇ Underwear ◇ Jerseys 			

Houses and building requirements

Garden

Other

Kitchen	Paint	General	General
<ul style="list-style-type: none"> ◇ Pots ◇ Crockery ◇ Cutlery ◇ Dishcloths ◇ Serving spoons 	<ul style="list-style-type: none"> ◇ Roof paint ◇ Indoor paint ◇ Exterior wall paint <p>(Kindly contact the office for paint colours required)</p>	<ul style="list-style-type: none"> ◇ Individual hosepipes and fittings ◇ Sprinklers ◇ Organic fertilizer and organic seedlings ◇ Garden implements i.e. spades, rakes, forks etc. 	<ul style="list-style-type: none"> ◇ Musical ◇ Instruments (percussion) ◇ Wool ◇ Crochet cotton

Life Skills Programme

Sports equipment

General		
<ul style="list-style-type: none"> ◇ Stationery i.e. pencils, pens, highlighters, rulers, glue, sharpeners ◇ A4 hard cover books 	<ul style="list-style-type: none"> ◇ Balls ◇ Netball balls ◇ Bocce set 	<ul style="list-style-type: none"> ◇ Tennis balls ◇ Swing ball

Care Pack

Care Pack items

<p>Presently we are solely responsible for the needs of approximately 20 Residents. Opposite is a choice of necessary items needed monthly by our residents. If you would like to select items from this list and prepare a monthly care pack it would be so appreciated by the residents concerned.</p>	<ul style="list-style-type: none"> ◇ Soap / Toothpaste / Deodorant / Shaving cream / Body lotion / Aqueous cream / Shampoo / Tissues / Disposable Razors 	<ul style="list-style-type: none"> ◇ Coffee & Tea ◇ Sugar ◇ Biscuits ◇ Cup-a-soup ◇ Long life milk ◇ Coldrinks
--	---	--

General

The farm is always in need of household and kitchen equipment, washing machines, tumble dryers and second hand clothing. Any donations made to Cluny Farm will be much appreciated.

Should you wish to make a cash donation, Cluny Farm is in a position to supply you with an IT18A tax certificate for tax purposes.

RESIDENTS SHOPPING

Forest Inn and Melody House went out shopping on Monday to the Forest Hill Shopping Centre. After a few false starts they managed to leave after lunch with cash in hand and their shopping lists.

A good time was had by all and in some cases monies were deposited back into their savings accounts. It is so important for all our residents to budget for their needs and enjoy spending their hard earned money.

Here are some of their comments:

~~~

*"I went shopping on Monday afternoon with a group of residents and staff. Silvia gave money to do my own shopping and I bought a bag and takkies for my holiday. I bought 2 packets of chips and coldrinks for the road on the bus to Durban.*

*I only had R600 and I helped a friend in need with money. I gave her R100 for her phone. She will pay me back.*

*I enjoyed my day out, it was nice to be together in a group. I still had enough money on me".*

*Submitted by Beverley*

~~~

"Forest Inn went shopping at Forrest Hill Shopping Centre. We enjoyed it and after shopping we bought coldrinks. We enjoy it very much. We like shopping to show that we have manners".

Submitted by Yvette

CLUNY FARM WORKSHOPS

At Cluny Farm we strive to empower our residents and encourage them to be independent. Our workshops are income generating and we have skilled up the residents to work on these lines and at the same time earn an income for themselves.

Currently we have 2 lines i.e. the assembly and packaging of plumbing products and the packing of shower caps and hygiene bags.

Our residents reached a target in that they packed and packaged 20 000 individual items within two days. This is a huge achievement and they are very proud indeed.

Submitted by Jessica Topper

BANKING ACCOUNTS—RESIDENTS

Soon we will be opening bank accounts for all the Residents. This forms part of our Life Skills programme and will enable the Residents to control their money and also to feel more independent and in control of their affairs.

We are planning for our bankers, Standard Bank, to visit the farm in the next two weeks.

WELLNESS DAY

Audiologists from the Ear Institute, Bryanston branch are visiting the farm on Monday 10th and Wednesday 12th May for a Hearing Wellness Day. They will perform hearing checks, hearing aid repairs and ear cleaning for staff and residents as required.

We are very grateful to the Ear Institute for choosing Cluny Farm for this much needed service.

HANDS OF MERCY

Cluny residents are very fortunate as Hands of Mercy will be providing lunch to all residents on Saturday, 8 May 2021.

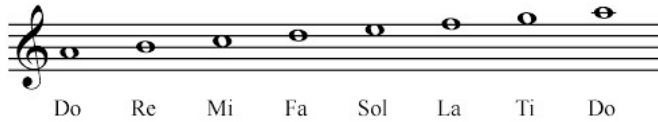
An early Thank you goes out to all the ladies and gents from Hands of Mercy, who give freely of their time and of themselves. We at Cluny Farm appreciate your kind gesture.



CLUNY FARM CHOIR

We are currently reviving the Cluny Choir and we hope to have auditions in the next week or so. For accompaniment to the Choristers we are in need for percussion instruments such as triangles, drums, tambourines, castanets and recorders.

We hope once Covid 19 restrictions are lifted and we are once again able to host functions at the farm, you will all be able to hear them sing.



MAY BIRTHDAYS

4	Tracey	11	Clive
18	Gail Higginson	19	Alan
21	Lebo		



CALENDAR MAY 2021

7	Mothers Day brunch at Cluny
8	Cluny Board Meeting
10 & 12	Ear screening by The Ear Institute— Bryanston branch
11	Botanical Gardens outing
19	Bird Park outing
30	General Managers Tea

We would like to express our heartfelt thanks and appreciation to all our *monthly donors* and *families* who donate clothing and other items on a continual basis.

A mention and special thanks to Beaulieu Prep who donated 15 boxes of Easter eggs to our residents. The residents sure enjoyed them. Thank you too, to everyone else that donated Easter eggs.

We will be having a jumble sale mid June, covid permitting. Please keep us in mind for any unwanted items. Should you not be able to deliver these items, we can make arrangements and collect them from you.

CLUNY FARM BANK DETAILS

Name:	Cluny Farm Centre
Bank:	Standard Bank
Account no.:	01993704
Branch:	Fourways Crossing
Branch code:	009953
Account type:	Current

HOUSES CONTACT LIST

Bambi	082-783-1981
Forest Inn	082-783-1984
Harmony	082-783-1982
Melody	082-783-1985
Symphony	082-820-5838